

# 日本獣医生命科学大学

Nippon Veterinary and Life Science University



## 大学院獣医生命科学研究科

Graduate School of  
Veterinary Medicine and Life Science

### 獣医学専攻博士課程

Doctoral Course in Veterinary Medicine

### 獣医保健看護学専攻博士前期課程・後期課程

Doctoral and Masters Courses in  
Veterinary Nursing and Technology

### 応用生命科学専攻博士前期課程・後期課程

Doctoral and Masters Courses in  
Applied Life Science

## 獣医学部

Faculty of Veterinary Science

### 獣医学科

School of Veterinary Medicine

### 獣医保健看護学科

School of Veterinary Nursing and Technology

## 応用生命科学部

Faculty of Applied Life Science

### 動物科学科

School of Animal Science

### 食品科学科

School of Food Science and Technology

# Introduction

Founded in 1881 by nine young veterinarians who selected 10 hopeful young pupils, Nippon Veterinary and Life Science University is the oldest private school in Japan specializing in Veterinary Medicine and Science.

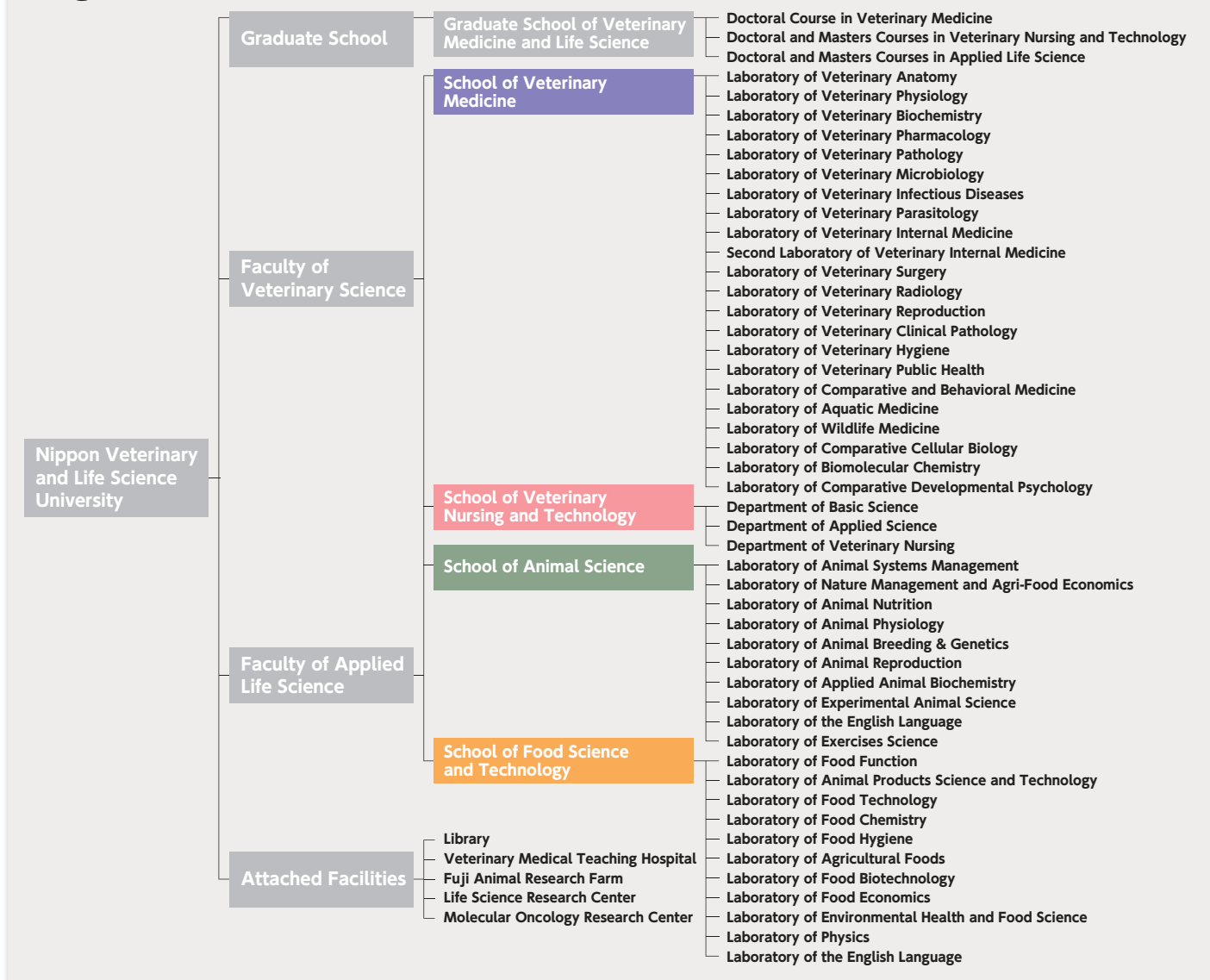
Over the intervening 130 years, as a university specializing in life science, four schools have developed: Veterinary Medicine; Veterinary Nursing and Technology; Animal Science; Food Science and Technology. We offer three graduate courses: Veterinary Medicine; Life Science; and Veterinary Nursing and Technology. We offer a four-year graduate course for a doctoral degree in Veterinary Medicine. We also offer the first two-year graduate courses for a Masters degree and a three-year graduate course for a doctoral degree in Veterinary Nursing and Technology and Applied Life Science. We are a small-scale university; however, the alumni association has an active membership of approximately 16,000 alumni.

As a mission of our institution, the Faculty of Veterinary Science helps researchers to identify the causes of various diseases as well as ways to prevent them. In a similar way, the Faculty of Applied Life Science aids researchers in finding ways to produce healthy animals for food and ensuring food safety. We have recently built a Veterinary Medical Teaching Hospital; a clinical facility for large animals at Fuji Animal Research Farm; a high-tech Research Center for Advanced Veterinary Medical Research; a new building for Academic Research; and a new classroom building to provide our students with high-quality educational facilities. Our institution has been making steady progress as a leading university in Veterinary and Life Sciences.

**Location** Musashi-Sakai Campus (Main Campus).....20km West from Downtown Tokyo  
 Fuji Animal Research Farm.....120km from Musashi-Sakai Campus, in the outskirts of Mt. Fuji



## Organization



## Institution & Facilities



Classroom&Laboratory Buildings



Library



Career Support Center



Research Center for Animal Disease Control and Prevention



Riding Grounds

## Veterinary Medical Teaching Hospital



Veterinary Medical Teaching Hospital



Entrance



Treatment Room



Surgery Room



ICU



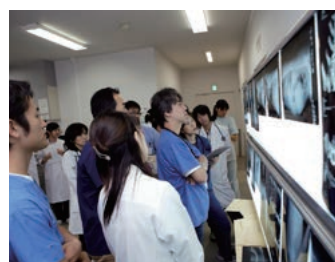
Linear Accelerator



MRI



Diagnostic Laboratory





## Fuji Animal Research Farm



Fuji Seminar House



Milking Cow Shed



Milk Processing Unit



Milking Machine



## Life in NVLU



Kennel Club



Aisokai, Wind Ensemble



### Enrollment (October 1, 2012 present)

#### Postgraduate: Graduate School of Veterinary Medicine and Life Science

- Doctoral Course in Veterinary Medicine (4 years): 29
- Doctoral Course in Veterinary Nursing and Technology (3years): 5
- Master's Course in Veterinary Nursing and Technology (2years): 14
- Doctoral Course in Applied Life Science (3years): 3
- Master's Course in Applied Life Science (2years): 23

Total: 74

#### Undergraduate: Faculty of Veterinary Science:

- School of Veterinary Medicine (6 years): 567
- School of Veterinary Nursing and Technology (4 years): 393

#### Faculty of Applied Life Science:

- School of Animal Science (4 years): 362
- School of Food Science (4 years): 346

Total: 1,668

### Faculty (October 1, 2012 present)

Professor: 46, Associate Professor: 23, Senior Assistant Professor: 32,  
Assistant Professor: 20, Assistant in Veterinary Medical Teaching Hospital: 4

Total: 125



# Graduate School of Veterinary Medicine and Life Science

## Doctoral Course in Veterinary Medicine

The Doctoral course in Veterinary Medicine in the Graduate School is of four-year duration. In this program, a student engages in high-level studies on the morphology and function of normal animals as well as investigating the pathogenesis, therapy, and prevention of disease in diseased animals (including Veterinary Public Health and Veterinary Epidemiology). The student will specialize in one of the following four subjects: Veterinary Science I, Veterinary Science II, Clinical Veterinary Medicine, or Applied Veterinary Medicine.

## Doctoral and Masters Courses in Veterinary Nursing and Technology

The Graduate School of Veterinary Nursing and Technology trains students to become leading researchers or educators in Veterinary Nursing and Technology, or to be special Veterinary Nursing staff members with a wealth of expert knowledge and skills through various practices. The Master course (two-year program) is being offered in two areas: Clinical Science for Veterinary Nursing and Bioscience for Veterinary Technology. The doctoral course (three-year program) is an advanced Veterinary Nursing and Technology course. This field consists of four areas of specialization: Functional Animal Anatomy; Environmental Science and Animals; Practical Science for Veterinary Nursing; and Ecodynamics for Nursing Sciences.



## Doctoral and Masters Courses in Applied Life Science

The Graduate School of Applied Life Science offers integrated Masters (the first two-year term) and Doctoral (the last three-year term) courses. To produce excellent professionals and researchers in the field of Animal and Food Sciences, the Graduate School offers Masters program in five subject areas Doctoral program in one subject area. The aims of these programs are to encourage talented students to acquire profound knowledge in their specialized field, and to develop the ability of creative thinking as scientists.



## Faculty of Veterinary Science

### School of Veterinary Medicine

Undergraduate students majoring in veterinary science are required to complete a six-year professional educational program. They learn and acquire the clinical knowledge and skills required for the care of various types of animals (industrial, companion, wild), disease prevention, fish diseases, epidemic common to humans and animals, to breed and improve livestock, and to secure the safety of food and medicines.



### School of Veterinary Nursing and Technology

The School of Veterinary Nursing and Technology was established in April, 2005. The program is based on scientific research as well as veterinary nursing and technology. The course, which meets the highest academic standards in Japan, comprises basic Veterinary Science, Applied Veterinary Science, and Veterinary Nursing.



## Faculty of Applied Life Science

### School of Animal Science

Educational programs in the School of Animal Science are based on three areas to deepen the knowledge and further research of animal science: (i) Breeding, Reproduction, and Nutrition; (ii) Genetic Engineering and Biotechnology; and (iii) Management and Economics.



### School of Food Science and Technology

This school offers students unique opportunities to acquire both scientific knowledge and research skills in five major food-related areas: palatability and safety; nutrition and physiological function; processing and conditioning; distribution system and economics; and biochemistry and biotechnology. In their four years of education, students will gain extensive knowledge and enhance the level of creative and analytical thinking to become specialists in the field of Food Science.



## History

- 1881 Established as the first private veterinary school in Tokyo
- 1949 According to Japan's new education system, name changed to Nippon Veterinary and Zootechnical College
- 1952 Merged with Nippon Medical School
- 1962 Graduate School of Veterinary Medicine (Masters and Doctoral course) established
- 1967 School of Food Science and Technology established
- 1984 Initiated a six-year program for students in the School of Veterinary Medicine
- 1992 Established Fuji Animal Research Farm in Yamanashi Prefecture
- 2003 Built New hospital (Veterinary Medical Teaching Hospital)
- 2005 Established School of Veterinary Nursing and Technology, and Masters course in Applied Life Science in the Graduate School
- 2006 Name changed to Nippon Veterinary and Life Science University
- 2008 Established Doctoral course in Applied Life Science in the Graduate School
- 2009 Established Masters course in Veterinary Nursing and Technology in the Graduate School
- 2011 Established Doctoral course in Veterinary Nursing and Technology in the Graduate School
- 2011 Held a special ceremony for the 130th anniversary of the setting up of the university
- 2012 The number of admissions in the School of Veterinary Nursing and Technology and the School of Animal Science increased from 80 to 100



The Nippon Medical School Foundation

# Nippon Veterinary and Life Science University

Graduate School of Veterinary Medicine and Life Science

Doctoral Course in Veterinary Medicine

Doctoral and Masters Course in Veterinary Nursing and Technology

Doctoral and Masters Course in Applied Life Science

Faculty of Veterinary Science : School of Veterinary Medicine

School of Veterinary Nursing and Technology

Faculty of Applied Life Science : School of Animal Science

School of Food Science and Technology

1-7-1 Kyonancho, Musashino-shi, Tokyo 180-8602 Japan

Telephone: +81-422-31-4151, Fax: +81-422-33-2094

<http://www.nvlu.ac.jp/>

### Access

2 minutes walk from South Exit  
of Musashisakai station,  
on JR Chuo Line

